



# HYDRA-TECH PUMPS



**motralec**

4 rue Lavoisier . ZA Lavoisier . 95223 HERBLAY CEDEX  
Tel. : 01.39.97.65.10 / Fax. : 01.39.97.68.48  
Demande de prix / e-mail : [service-commercial@motralec.com](mailto:service-commercial@motralec.com)  
[www.motralec.com](http://www.motralec.com)



**"THE WORLD PUMPS US FOR SOLUTIONS"**



# HYDRA- TECH PUMPS



- HYDRAULIC DRIVE  
SUBMERSIBLE PUMPS
- HYDRAULIC  
POWER UNITS
- PUMP SYSTEMS

Welcome to the new **HYDRA-TECH PUMPS Products Catalog**. Since 1977 we have pioneered the development of Hydraulic Drive Submersible Pumps and continue to produce new and innovative products to keep pace with today's changing world.

Our pumps are designed to cover the widest range of applications in the construction, municipal, petro-chem, mining, utilities, and marine industries. Many models are offered in various materials of construction to handle the most difficult job conditions.

Our hydraulic power units are designed to match our line of pumps. This ensures you ***maximum performance, efficiency, and reliability.***

**HYDRA-TECH** also builds custom designed hydraulic power units and pumping systems to meet the need for specialized applications.

# **NEW PRODUCTS**



## HT15GAT Power Unit

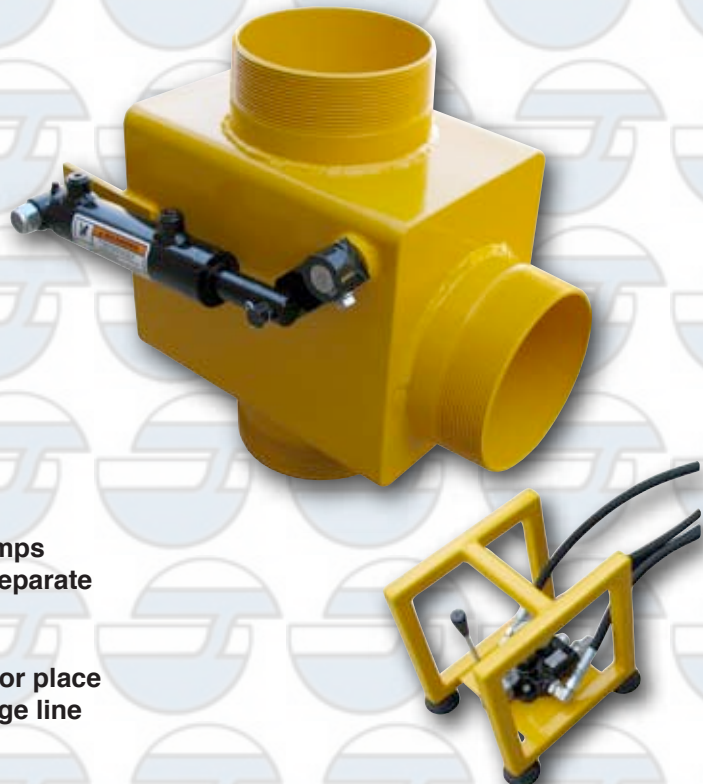
This advanced hydraulic power unit features an electronic auto-throttle that allows you to set a desired hydraulic output and when the unit is under load the engine will speed up to this setting. This unit is perfect for operating hydraulic tools and pumps that demand full power only as-needed. This saves fuel and extends the life of the equipment.

<b>Engine</b>	15HP Honda
<b>Hydraulic Output Flow</b>	Variable to 9 GPM
<b>Hydraulic Pressure</b>	Max 2200 PSI
<b>Weight</b>	230 Lbs.

## Hydra-Gate Slurry Mixing Valve

The Hydra-Gate slurry mixing valve is a 6" hydraulically operated diverter valve that is used to redirect the pump discharge flow back toward the area of the pump inlet to promote mixing of solids into a pump-able slurry. Once the solids are in suspension the valve is shifted to allow the mixture to be pumped to the desired location.

- Use with any hydraulic submersible pump with flows to 1800 GPM
- Can be used with centrifugal pumps and electric submersibles with separate hydraulic power source
- Attach directly to pump or place anywhere in the discharge line

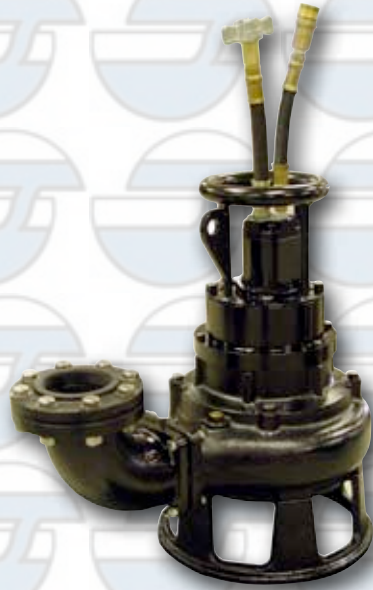


# NEW PRODUCTS

## S4SHR 4" Shredder Pump

The S4SHR is designed to continuously rip and shear solids with a 360° shredding action. Great for municipal, industrial, agricultural and institutional waste applications. A guide rail assembly is available for stationary applications. A low profile version is available to fit into 22" openings and man-holes.

Discharge Size	4"
Solids Handling	Macerater
Max Flow	810 GPM
Max Head	125 Feet
Hydraulic Input Flow	Max 15 GPM
Hydraulic Pressure	Max 2600 PSI
Weight	254 Lbs.



S4SHR



Carbide Tipped Impeller Shreds Debris



S4SHR-LP  
Low Profile Version

## HT30DQV Power Unit



Quiet Hydraulic Power

This Sound Attenuated hydraulic power unit is designed to be used in residential areas and other locations where low sound levels are required. With a EPA rated tier 4 Yanmar diesel engine and large fuel tank, the HT30DQV can power our pumps and run continuously for long periods.

Engine	30HP Yammar Diesel
Hydraulic Output Flow	Variable to 15 GPM
Hydraulic Pressure	Max 2800 PSI
Sound Level	64 Db @ 23 Ft.
Weight	1850 Lbs.

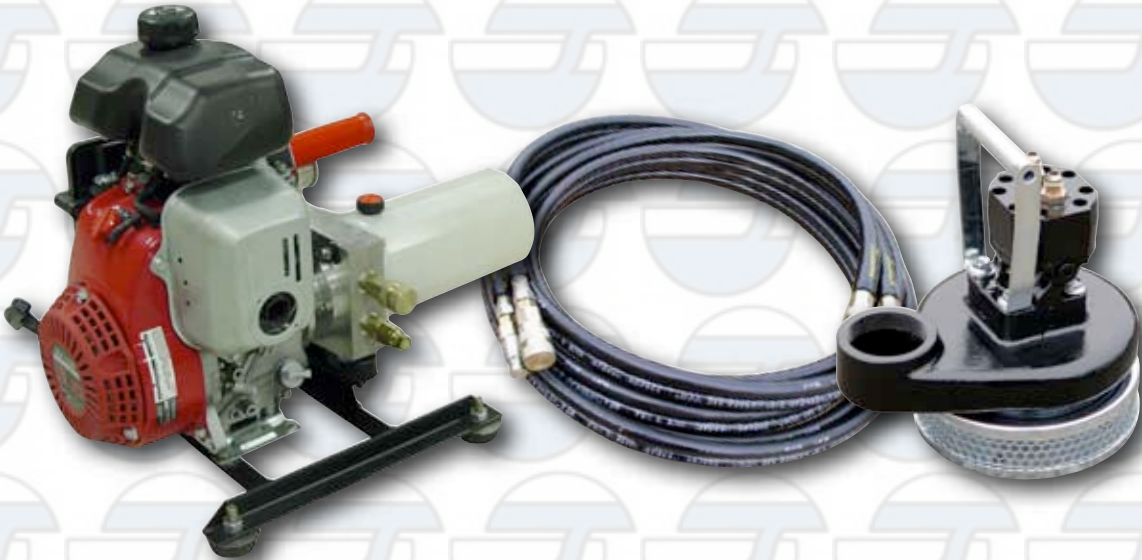


# PRODUCT UPDATE



## Mini - Sub Pump System

Our extremely lightweight pumping system includes the S2C 'Mini-Sub' 2" submersible pump and HT3G portable engine driven hydraulic power unit. This unit now features an easy starting, 3 HP, 4-cycle Honda engine that can easily be carried by one person. The new system also includes a 25 ft. set of twin-line hydraulic hoses. The S2C pump is sold separately for those who have compatible hydraulic power available. The HT3G is also sold separately for use where a compact, self-contained HPU is needed.



### Advantages

- Easy to handle and set up
- No priming is required
- Variable speed hydraulic drive
- Safe - no electric needed
- Fits into small spaces

### Typical Applications

- Fire / Rescue services
- Basement pump out
- Power utility vaults
- Environmental cleanup
- Pool maintenance



# Mini-Sub Pump System Details

The S2C Mini-Sub is our most versatile, all purpose, utility pump. As part of the Mini-Sub System that includes our HT3G Power Unit, this pump offers the best combination of light weight, portability and pumping performance of any self-contained submersible pump system on the market today.

<b>Discharge Size</b>	2"
<b>Max Flow</b>	95 GPM
<b>Max Head</b>	65 Feet
<b>Hydraulic Input Flow</b>	Max 1.5 GPM
<b>Hydraulic Pressure</b>	Max 2500 PSI
<b>Weight</b>	12 Lbs.



**S2C Pump**

For complete specifications go to [www.hydra-tech.com/pdf/pumps/s2c\\_mini.pdf](http://www.hydra-tech.com/pdf/pumps/s2c_mini.pdf)



**HT3G Power Unit**

This Honda driven power unit is primarily designed to drive our 2" 'Mini-Sub' submersible pump. It can also provide very portable, self-contained, hydraulic power to run other hydraulic tools and equipment.

<b>Engine</b>	3HP Honda GX100
<b>Hydraulic Output Flow</b>	Variable to 1.2 GPM
<b>Hydraulic Pressure</b>	Max 2400 PSI
<b>Weight</b>	43 Lbs.

For complete specifications go to [www.hydra-tech.com/pdf/power\\_units/ht3g.pdf](http://www.hydra-tech.com/pdf/power_units/ht3g.pdf)



**HYDRA-TECH  
PUMPS**

167 Stock Street, Nesquehoning, PA 18240 Phone: 570-645-3779 Fax: 570-645-4061  
Website: [www.hydra-tech.com](http://www.hydra-tech.com) E-Mail: [htpump@hydra-tech.com](mailto:htpump@hydra-tech.com)

# CONTENTS

## SUBJECT

**Why Hydraulic Submersibles?**

---

**Slim Line Pumps**

---

**General Purpose Pumps**

---

**Axial Flow Water Pumps**

---

**Sand and Slurry Pumps**

---

**Solids Handling Pumps**

---

**Hydraulic Power Units**

---

**Custom Built Units / Accessories and Options**

---

**Compatibility Chart**

---

**Applications Worldwide**

---

*The HYDRA-TECH catalog is provided to illustrate a general overview of the products we manufacture. Its intent is to give you a brief summary of the capabilities of our pumps and power units. For more detailed information on any of these products, contact HYDRA-TECH Pumps or your local dealer.*

## OUR COMMITMENT

**We have built our reputation by listening to recommendations from "the field" to help influence new product development and refinement. Rather than imitate the designs of others, we create our pumps from the ground up to best suit our customers needs. Our goal is to always produce equipment that is versatile, reliable, easy-to-maintain, simple to operate, and economical to own!**

***Give us a chance to prove the HYDRA-TECH advantage to you.***

*\*As we are always striving to improve our products, the specifications in this catalog are subject to change without notice.*

# THE HYDRA-TECH ADVANTAGE



## Why Use HYDRA-TECH Hydraulic Submersible Pumps?

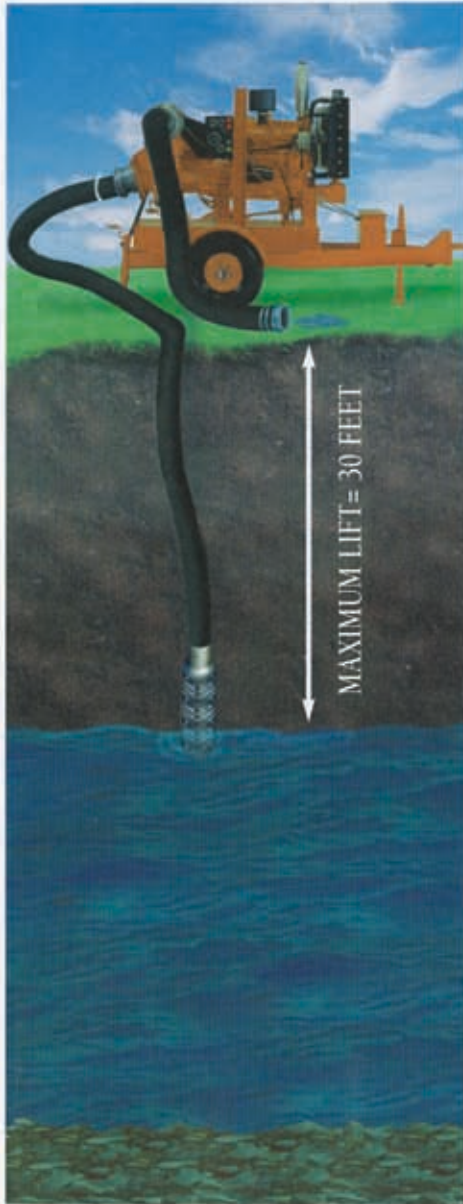
- **Efficient, Variable Speed Drive Saves Fuel**
- **Easy set-up, can be operational in minutes**
- **No suction lift problems common with centrifugal pumps**
- **No electrical hazard encountered with electric submersibles**
- **One pump can perform tasks of several fixed speed pumps**
- **Many of our pumps can be bolted inline to become booster pumps**
- **Wide range of pumps designed to handle almost any application**
- **Overall size and weight is less than any comparable electric submersible**
- **Maintenance can be performed in the field with minimal mechanical skills**
- **Many different pumps can be conveniently driven from a single hydraulic power source!**



 **HYDRA-  
TECH PUMPS**

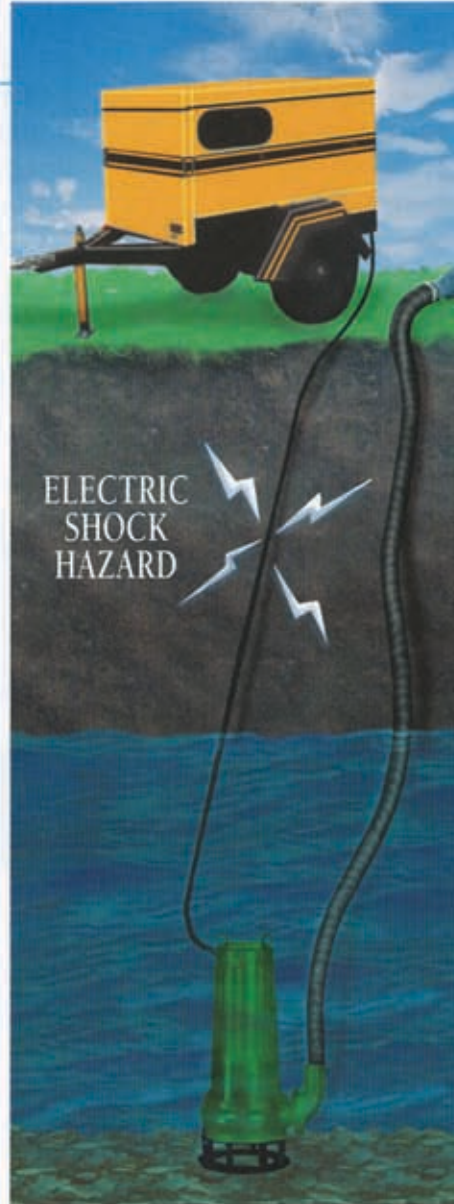
# Compare The 3 Types Of Pumps and Decide For Yourself

## Dry Priming or Self-Priming Centrifugal Pump



- Effective only at low suction lifts
- Volume is greatly reduced at suction lifts over 15 feet
- Maximum suction lifts only 25 to 30 feet

## Electric Submersible Pump with Generator



- Submersible pump is not affected by suction lift limitations
- Generator must run at constant full speed at all times
- Fuel usage is high regardless of demand on pump
- May be unsafe to operate in certain areas
- Potential shock hazard
- Costly to repair



## Hydraulic Submersible Pump System



- Submersible pump is NOT affected by suction lift limitations
- Variable pump speed to suit job conditions
- High overall efficiency and low fuel consumption
- Can be used in hazardous environments
- Many different pumps can be driven from a single power unit
- Pump and power unit are field serviceable
- Easy and inexpensive to maintain

# SLIM LINE PUMPS



Slim Line Design fits into 4" Well Casing. Available in all Stainless Steel Construction for Hostile Environments.

## S310

DISCHARGE SIZE:	1 1/4"
MAX. DIAMETER:	3 1/8"
MAX. FLOW:	65 GPM
MAX. HEAD:	140 Ft.
HYD. INPUT:	4.5 GPM Max.
HYD. PRESSURE:	2000 PSI Max.
WEIGHT:	8 lbs.



Slim Line 1 1/2" Dewatering Pump. Fits into a 6" Well Casing.

## S1.5A

DISCHARGE SIZE:	1 1/2"
MAX. DIAMETER:	5 5/16"
MAX. FLOW:	165 GPM
MAX. HEAD:	118 Ft.
HYD. INPUT:	7 GPM Max.
HYD. PRESSURE:	2000 PSI Max.
WEIGHT:	17 lbs.



Slim Line 3" Dewatering Pump. Fits into an 8" Well Casing.

## S3A

DISCHARGE SIZE:	3"
MAX. DIAMETER:	7 1/2"
MAX. FLOW:	350 GPM
MAX. HEAD:	210 Ft.
HYD. INPUT:	12 GPM Max.
HYD. PRESSURE:	2000 PSI Max.
WEIGHT:	41 lbs.

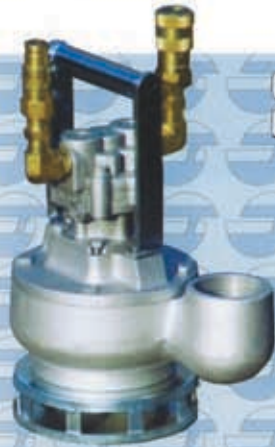


Powerful 6" Slim Line Pump. Fits into Confined Spaces.

## S6A

DISCHARGE SIZE:	6"
MAX. DIAMETER:	12 1/2"
MAX. FLOW:	1325 GPM
MAX. HEAD:	210 Ft.
HYD. INPUT:	43 GPM Max.
HYD. PRESSURE:	2500 PSI Max.
WEIGHT:	205 lbs.

# GENERAL PURPOSE PUMPS



Channel Impeller for High Efficiency.  
Ductile Iron Body. Available in Aluminum.

## S2TC-2

DISCHARGE SIZE:	2"
SOLIDS HANDLING:	1 1/2"
MAX. FLOW:	210 GPM
MAX. HEAD:	125 Ft.
HYD. INPUT:	5 GPM Max.
HYD. PRESSURE:	2500 PSI Max.
MAX. WIDTH:	9 1/2"
WEIGHT:	26 lbs.



3" High Volume Channel Impeller Pump.  
Aluminum Body Std. Available in Ductile Iron.

## S3TC

DISCHARGE SIZE:	3"
MAX. WIDTH:	11 3/4"
MAX. FLOW:	455 GPM
MAX. HEAD:	93 Ft.
HYD. INPUT:	8 GPM Max.
HYD. PRESSURE:	2500 PSI Max.
WEIGHT:	31 lbs. (Alum.)



Lightweight, Powerful 3"x2" High  
Performance with Aluminum Body.

## S3CML

DISCHARGE SIZE:	2"
MAX. WIDTH:	11 3/4"
MAX. FLOW:	480 GPM
MAX. HEAD:	400 Ft.
HYD. INPUT:	16 GPM Max.
HYD. PRESSURE:	3000 PSI Max.
WEIGHT:	45 lbs.



Compact, Very Powerful High  
Head Pump with Ductile Iron Body.

## S3CHL

DISCHARGE SIZE:	2"
MAX. WIDTH:	11 3/4"
MAX. FLOW:	500 GPM
MAX. HEAD:	425 Ft.
HYD. INPUT:	30 GPM Max.
HYD. PRESSURE:	3000 PSI Max.
WEIGHT:	88 lbs.

# WATER PUMPS

## AXIAL FLOW



High Volume, Axial Flow Pump.  
Economical and Very Portable 6" pump.

### S6P

DISCHARGE SIZE:	6"
MAX. DIAMETER:	11 3/4"
MAX. FLOW:	1100 GPM
MAX. HEAD:	25 Ft.
HYD. INPUT:	7 GPM Max.
HYD. PRESSURE:	2500 PSI Max.
WEIGHT:	44 lbs.



8" Mixed Flow Pump. High Volumes  
with Low Hydraulic Input.

### S8M

DISCHARGE SIZE:	8"
MAX. DIAMETER:	16"
MAX. FLOW:	2250 GPM
MAX. HEAD:	57 Ft.
HYD. INPUT:	18 GPM Max.
HYD. PRESSURE:	2800 PSI Max.
WEIGHT:	190 lbs.



12" Mixed Flow High Volume Pump.  
Versatile, able to Handle Large Flows.

### S12M

DISCHARGE SIZE:	12"
MAX. DIAMETER:	22"
MAX. FLOW:	4200 GPM
MAX. HEAD:	53 Ft.
HYD. INPUT:	28 GPM Max.
HYD. PRESSURE:	2900 PSI Max.
WEIGHT:	360 lbs.



18" Mixed Flow High Volume Pump.  
Specifically Designed for the Big Jobs!

### S18M

DISCHARGE SIZE:	18"
MAX. DIAMETER:	28"
MAX. FLOW:	10,000 GPM
MAX. HEAD:	60 Ft.
HYD. INPUT:	70 GPM Max.
HYD. PRESSURE:	2500 PSI Max.
WEIGHT:	897 lbs.

# SAND and SLURRY

# PUMPS

HYDRA-TECH is proud to bring our customers a range of pumps designed especially for **SAND and SLURRY** applications. These heavy duty pumps will perform with power and efficiency for this specific condition.

With features such as a built-in agitator and hardened wear parts, these heavy duty pumps are ideal for everything from filling sand bags, to desilting waterways.



This 3" Sand/Slurry Pump contains a Built-in Agitator to Stir-Up Solids.

## S3CSL

DISCHARGE SIZE:	3"
SOLIDS HANDLING:	1 1/2"
MAX. FLOW:	460 GPM
MAX. HEAD:	85 Ft.
HYD. INPUT:	10 GPM Max.
HYD. PRESSURE:	2800 PSI Max.
MAX. WIDTH:	16 1/4"
WEIGHT:	231 lbs.



The 4" Version of our Sand/Slurry Pump. Hardened Wear Parts!

## S4CSL

DISCHARGE SIZE:	4"
SOLIDS HANDLING:	1 1/2"
MAX. FLOW:	730 GPM
MAX. HEAD:	100 Ft.
HYD. INPUT:	17 GPM Max.
HYD. PRESSURE:	2800 PSI Max.
MAX. WIDTH:	16 1/4"
WEIGHT:	250 lbs.



A 6" Hydraulic Drive Sand/Slurry Pump Designed for De-Silting or Dredging.

## S6CSL

DISCHARGE SIZE:	6"
SOLIDS HANDLING:	1 1/2"
MAX. FLOW:	1250 GPM
MAX. HEAD:	135 Ft.
HYD. INPUT:	28 GPM Max.
HYD. PRESSURE:	2800 PSI Max.
MAX. WIDTH:	21 1/4"
WEIGHT:	495 lbs.

# SOLIDS HANDLING PUMPS



Vortex Impeller Handles Stringy Solids. Ductile Iron Body. Avail. in Aluminum or Stainless Steel.

## S2T-2

DISCHARGE SIZE:	2"
SOLIDS HANDLING:	1 1/2"
MAX. FLOW:	180 GPM
MAX. HEAD:	92 Ft.
HYD. INPUT:	5 GPM Max.
HYD. PRESSURE:	2500 PSI Max.
MAX. WIDTH:	9 1/2"
WEIGHT:	25 lbs.



3" Vortex Flow Pump. Aluminum Body. Also Available in Ductile Iron.

## S3T

DISCHARGE SIZE:	3"
SOLIDS HANDLING:	2 1/2"
MAX. FLOW:	385 GPM
MAX. HEAD:	78 Ft.
HYD. INPUT:	8 GPM Max.
HYD. PRESSURE:	2500 PSI Max.
MAX. WIDTH:	11 3/4"
WEIGHT:	25 lbs.



3" Vortex Flow Sewage Pump. Fully Recessed Impeller for Stringy Solids.

## S3TR

DISCHARGE SIZE:	3"
SOLIDS HANDLING:	2 1/2"
MAX. FLOW:	360 GPM
MAX. HEAD:	69 Ft.
HYD. INPUT:	8 GPM Max.
HYD. PRESSURE:	2500 PSI Max.
MAX. WIDTH:	11 3/4"
WEIGHT:	56 lbs. (Iron)



3" High-Head Vortex Flow Pump. Available in Aluminum or Ductile Iron.

## S3VHL

DISCHARGE SIZE:	3"
SOLIDS HANDLING:	3"
MAX. FLOW:	700 GPM
MAX. HEAD:	165 Ft.
HYD. INPUT:	18 GPM Max.
HYD. PRESSURE:	3000 PSI Max.
MAX. WIDTH:	19 3/4"
WEIGHT:	289 lbs. (Iron)

# SOLIDS HANDLING

# PUMPS



**4" Trash Pump with Efficient Channel Impeller. Ductile Iron Construction.**

## S4T

DISCHARGE SIZE:	4"
SOLIDS HANDLING:	3"
MAX. FLOW:	875 GPM
MAX. HEAD:	92 Ft.
HYD. INPUT:	15 GPM Max.
HYD. PRESSURE:	2500 PSI Max.
MAX. WIDTH:	19½"
WEIGHT:	165 lbs.



**Centrifugal Screw Pump Capable of Pumping Heavy Oils, Latex, and Other Viscous Liquids.**

## S4SCR

DISCHARGE SIZE:	4"
SOLIDS HANDLING:	1¾"
MAX. FLOW:	1150 GPM
MAX. HEAD:	200 Ft.
HYD. INPUT:	16 GPM Max.
HYD. PRESSURE:	3600 PSI Max.
WEIGHT:	54 lbs.



**4" Vortex Flow Sludge, Slurry, and Desilting Pump. Aluminum, Ductile Iron, and Stainless Steel Avail.**

## S4THL

DISCHARGE SIZE:	4"
SOLIDS HANDLING:	3½"
MAX. FLOW:	1000 GPM
MAX. HEAD:	175 Ft.
HYD. INPUT:	30 GPM Max.
HYD. PRESSURE:	3000 PSI Max.
WEIGHT:	205 lbs. (Alum.)



**4" High-Head Vortex Flow Pump. Fits through 20" Openings.**

## S4VHL

DISCHARGE SIZE:	4"
SOLIDS HANDLING:	3"
MAX. FLOW:	750 GPM
MAX. HEAD:	210 Ft.
HYD. INPUT:	25 GPM Max.
HYD. PRESSURE:	3000 PSI Max.
MAX. WIDTH:	19¾"
WEIGHT:	160 lbs. (Alum.)

# SOLIDS HANDLING PUMPS



All purpose 6" Vortex Flow Trash / Sewage Pump. Aluminum, Ductile Iron, and Stainless Steel Avail.

**S6T**

DISCHARGE SIZE:	6"
SOLIDS HANDLING:	5"
MAX. FLOW:	1600 GPM
MAX. HEAD:	110 Ft.
HYD. INPUT:	30 GPM Max.
HYD. PRESSURE:	3000 PSI Max.
WEIGHT:	215 lbs. (Alum.)



6" High Volume Channel Impeller Trash Pump. Fits into 21" Manhole.

**S6TC**

DISCHARGE SIZE:	6"
SOLIDS HANDLING:	3"
MAX. FLOW:	1900 GPM
MAX. HEAD:	125 Ft.
HYD. INPUT:	28 GPM Max.
HYD. PRESSURE:	3000 PSI Max.
WEIGHT:	255 lbs.



6" Wastewater Pump that Fits into 21" Manhole Openings for Sewer By-Pass Applications.

**S6V**

DISCHARGE SIZE:	6"
SOLIDS HANDLING:	5"
MAX. FLOW:	1550 GPM
MAX. HEAD:	70 Ft.
HYD. INPUT:	30 GPM Max.
HYD. PRESSURE:	3000 PSI Max.
WEIGHT:	255 lbs.



8" Vortex Flow Pump for Difficult Applications.

**S8T**

DISCHARGE SIZE:	8"
SOLIDS HANDLING:	6"
MAX. FLOW:	4400 GPM
MAX. HEAD:	140 Ft.
HYD. INPUT:	70 GPM Max.
HYD. PRESSURE:	2500 PSI Max.
WEIGHT:	536 lbs.



10" Vortex Flow Pump to Handle Large Solids. Ductile Iron Construction.

**S10T**

DISCHARGE SIZE:	10"
SOLIDS HANDLING:	8"
MAX. FLOW:	4800 GPM
MAX. HEAD:	120 Ft.
HYD. INPUT:	70 GPM Max.
HYD. PRESSURE:	2500 PSI Max.
WEIGHT:	830 lbs.

# SOLIDS HANDLING

# PUMPS

6000

SERIES



**4" High Performance Solids Handling Pump for Heavy Duty High Head Pumping Jobs.**

**S6105**

DISCHARGE SIZE:	4"
SOLIDS HANDLING:	3"
MAX. FLOW:	1650 GPM
MAX. HEAD:	310 Ft.
HYD. INPUT:	70 GPM Max.
HYD. PRESSURE:	2500 PSI Max.
WEIGHT:	605 lbs.



**6" High Head Sewage / Sludge Pump, Ductile Iron Construction, Stainless Steel Avail.**

**S6150**

DISCHARGE SIZE:	6"
SOLIDS HANDLING:	3"
MAX. FLOW:	2500 GPM
MAX. HEAD:	310 Ft.
HYD. INPUT:	90 GPM Max.
HYD. PRESSURE:	2500 PSI Max.
WEIGHT:	650 lbs.



**8" High Performance Sewage / Sludge Pump, Ductile Iron Construction, Stainless Steel Avail.**

**S6200**

DISCHARGE SIZE:	8"
SOLIDS HANDLING:	4"
MAX. FLOW:	3500 GPM
MAX. HEAD:	220 Ft.
HYD. INPUT:	90 GPM Max.
HYD. PRESSURE:	2500 PSI Max.
WEIGHT:	715 lbs.



**10" High Performance Sewage / Sludge Pump, Ductile Iron Version, Stainless Steel Available.**

**S6250**

DISCHARGE SIZE:	10"
SOLIDS HANDLING:	4"
MAX. FLOW:	5200 GPM
MAX. HEAD:	190 Ft.
HYD. INPUT:	90 GPM Max.
HYD. PRESSURE:	2500 PSI Max.
WEIGHT:	800 lbs.



**12" Pump Handles Solids and Big Flows.**

**S6300**

DISCHARGE SIZE:	12"
SOLIDS HANDLING:	5"
MAX. FLOW:	8500 GPM
MAX. HEAD:	110 Ft.
HYD. INPUT:	90 GPM Max.
HYD. PRESSURE:	2500 PSI Max.
WEIGHT:	1020 lbs.

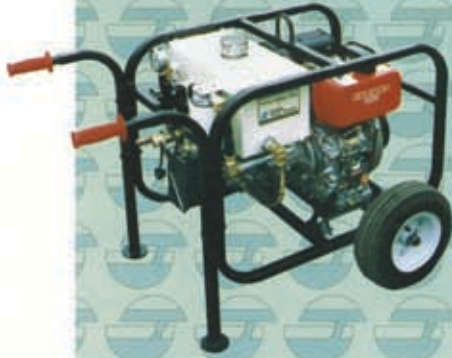
# HYDRAULIC POWER UNITS



Optional Wheel Kit Available.

## HT6G

POWER:	6.5 HP Honda Gas
HYD. PUMP:	Fixed Gear Type
MAX. FLOW:	3 GPM
MAX. PRESS:	1800 PSI
WEIGHT:	150 lbs.
HOSE PORTS:	1/2"
FUEL CAPACITY:	1 Gallon



Shown with Optional Wheel Kit.

## HT6D

POWER:	6 HP Yanmar Diesel
HYD. PUMP:	Fixed Gear Type
MAX. FLOW:	3 GPM
MAX. PRESS:	1800 PSI
WEIGHT:	192 lbs.
HOSE PORTS:	1/2"
FUEL CAPACITY:	1 Gallon



Great for Continuous Duty.

## HT7DXR

POWER:	7 HP Yanmar Diesel
HYD. PUMP:	Fixed Gear Type
MAX. FLOW:	4.5 GPM
MAX. PRESS:	1800 PSI
WEIGHT:	380 lbs.
HOSE PORTS:	1/2"
FUEL CAPACITY:	15 Gallon



Shown with Optional Wheel Kit.

## HT11D

POWER:	10 HP Yanmar Diesel
HYD. PUMP:	Fixed Gear Type
MAX. FLOW:	6 GPM
MAX. PRESS:	1800 PSI
WEIGHT:	225 lbs.
HOSE PORTS:	1/2"
FUEL CAPACITY:	1.45 Gallons

# HYDRAULIC POWER UNITS

Features Extended Run Fuel Tank.

## HT11DXR



POWER:	10 HP Yanmar Diesel
HYD. PUMP:	Fixed Gear
MAX. FLOW:	6 GPM
MAX. PRESS:	1800 PSI
WEIGHT:	375 lbs.
HOSE PORTS:	1/2"
FUEL CAPACITY:	15 Gallons

Optional Wheel Kit Available.

## HT13G



POWER:	13 HP Honda Gas
HYD. PUMP:	Fixed Gear
MAX. FLOW:	6 GPM
MAX. PRESS:	2100 PSI
WEIGHT:	185 lbs.
HOSE PORTS:	1/2"
FUEL CAPACITY:	2 Gallons

Features Extended Run Fuel Tank.

## HT13GXR



POWER:	13 HP Honda Gas
HYD. PUMP:	Fixed Gear
MAX. FLOW:	6 GPM
MAX. PRESS:	2100 PSI
WEIGHT:	350 lbs.
HOSE PORTS:	1/2"
FUEL CAPACITY:	15 Gallons

Heavy Duty for Hydraulic Tools.

## HT15DH



POWER:	15 HP Hatz Diesel
HYD. PUMP:	Fixed Vane
MAX. FLOW:	10 GPM
MAX. PRESS:	2000 PSI
WEIGHT:	600 lbs.
HOSE PORTS:	3/4"
FUEL CAPACITY:	1.8 Gallons

# HYDRAULIC POWER UNITS

Dependable Honda Power. Available with Fixed Displacement or Variable Pump.

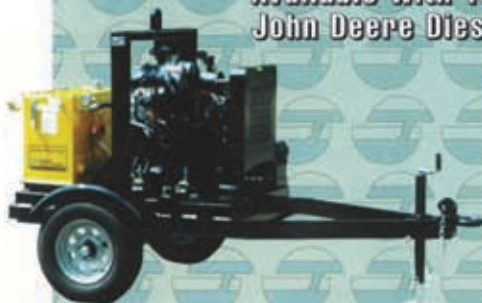
## HT20G/GV



POWER:	24 HP Honda Gas
HYD. PUMP:	Fixed Gear or Variable Piston
MAX. FLOW:	12 GPM
MAX. PRESS:	2100 PSI
WEIGHT:	450-480 lbs.
HOSE PORTS:	3/4"
FUEL CAPACITY:	15 Gallons

Available with Yanmar or John Deere Diesel Engine.

## HT25DYS/DJS



POWER:	25 HP Diesel
HYD. PUMP:	Fixed Vane
MAX. FLOW:	15 GPM
MAX. PRESS:	2500 PSI
WEIGHT:	1080 lbs.
HOSE PORTS:	3/4"
FUEL CAPACITY:	36 Gallons

Features Deutz Air-Cooled Diesel.

## HT25DD



POWER:	25 HP Deutz Diesel
HYD. PUMP:	Fixed Vane
MAX. FLOW:	15 GPM
MAX. PRESS:	2500 PSI
WEIGHT:	1380 lbs.
HOSE PORTS:	3/4"
FUEL CAPACITY:	37 Gallons

Yanmar Liquid-Cooled Diesel.

## HT35DYS



POWER:	35 HP Deutz Diesel
HYD. PUMP:	Fixed Vane
MAX. FLOW:	20 GPM
MAX. PRESS:	2500 PSI
WEIGHT:	1200 lbs.
HOSE PORTS:	3/4"
FUEL CAPACITY:	55 Gallons

# HYDRAULIC POWER UNITS

Features Deutz Air-Cooled Diesel.

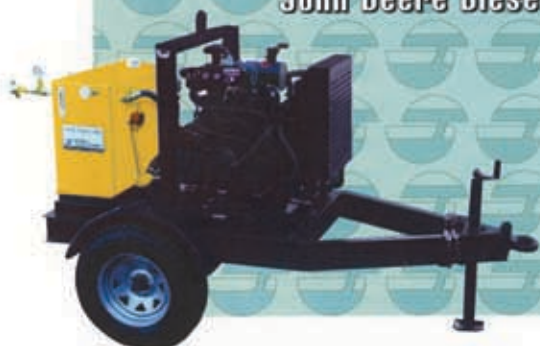
## HT35DD



POWER:	35 HP Diesel
HYD. PUMP:	Fixed Vane
MAX. FLOW:	20 GPM
MAX. PRESS:	2500 PSI
WEIGHT:	1580 lbs.
HOSE PORTS:	3/4"
FUEL CAPACITY:	40 Gallons

Available with Yanmar or John Deere Diesel Engine.

## HT50DYS/DJS



POWER:	50 HP Diesel
HYD. PUMP:	Fixed Gear
MAX. FLOW:	25 GPM
MAX. PRESS:	2600 PSI
WEIGHT:	1660 lbs.
HOSE PORTS:	1"
FUEL CAPACITY:	75 Gallons

Sound Attenuated Hydraulic Power Unit.

## HT50DQV



POWER:	J. Deere Turbo Diesel
HYD. PUMP:	Variable Piston
MAX. FLOW:	25 GPM
MAX. PRESS:	3000 PSI
WEIGHT:	2240 lbs.
HOSE PORTS:	1"
FUEL CAPACITY:	75 Gallons

"Q-PAK" - For Quiet Diesel Power!

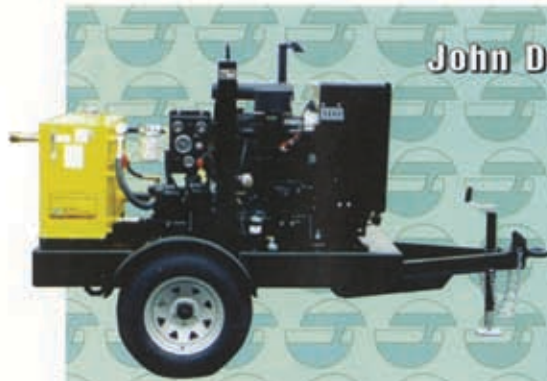
Trailer is Standard. Skid Frame Available.

## HT60DCV



POWER:	60 HP Deutz Diesel
HYD. PUMP:	Variable Piston
MAX. FLOW:	26 GPM
MAX. PRESS:	2900 PSI
WEIGHT:	2240 lbs.
HOSE PORTS:	1"
FUEL CAPACITY:	50 Gallons

# HYDRAULIC POWER UNITS



John Deere Power!

## HT60DJV

POWER:	60 HP J. Deere Diesel
HYD. PUMP:	Variable Piston
MAX. FLOW:	26 GPM
MAX. PRESS:	2900 PSI
WEIGHT:	2460 lbs.
HOSE PORTS:	1"
FUEL CAPACITY:	49 Gallons

Optional Trailer Available.



## HT75DJD/DJV

POWER:	75 HP J. Deere Diesel
HYD. PUMP:	Fixed Gear or Variable Piston
MAX. FLOW:	40 GPM
MAX. PRESS:	2500 PSI
WEIGHT:	2500 lbs.
HOSE PORTS:	1" or 1 1/4"
FUEL CAPACITY:	57 Gallons

Trailer is Standard. Skid Frame Available.



## HT100DCV

POWER:	100 HP Deutz Diesel
HYD. PUMP:	Variable Piston
MAX. FLOW:	53 GPM
MAX. PRESS:	2500 PSI
WEIGHT:	2590 lbs.
HOSE PORTS:	1 1/4"
FUEL CAPACITY:	53 Gallons

Optional Trailer Available.



## HT100DJV

POWER:	100 HP J. Deere Diesel
HYD. PUMP:	Variable Piston
MAX. FLOW:	53 GPM
MAX. PRESS:	2500 PSI
WEIGHT:	2860 lbs.
HOSE PORTS:	1 1/4"
FUEL CAPACITY:	53 Gallons

# HYDRAULIC POWER UNITS

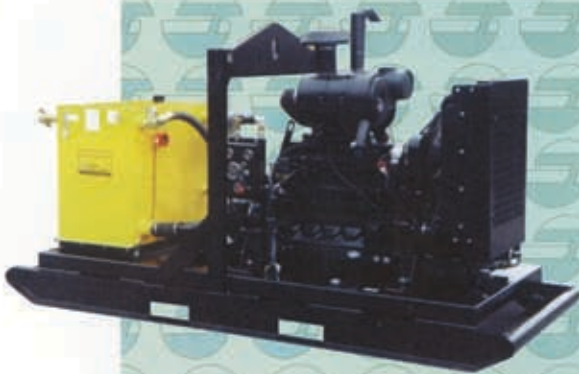
Shown with Optional Trailer.

## HT150DD/DV



POWER:	150 HP Deutz Diesel
HYD. PUMP:	Fixed Gear or Variable Piston
MAX. FLOW:	70 GPM
MAX. PRESS:	2500 PSI
WEIGHT:	4020 lbs. (skid)
HOSE PORTS:	1 1/2"
FUEL CAPACITY:	89 Gallons

## HT150DJV



POWER:	150 HP J. Deere Diesel
HYD. PUMP:	Variable Piston
MAX. FLOW:	70 GPM
MAX. PRESS:	2500 PSI
WEIGHT:	3860 lbs.
HOSE PORTS:	1 1/2"
FUEL CAPACITY:	89 Gallons

## HT200DD/DV



POWER:	200 HP Deutz Diesel
HYD. PUMP:	Fixed Gear or Variable Piston
MAX. FLOW:	90 GPM
MAX. PRESS:	2500 PSI
WEIGHT:	4020 lbs.
HOSE PORTS:	1 1/2"
FUEL CAPACITY:	89 Gallons

Shown with Optional Trailer.

## HT200DJD/DJV



POWER:	200 HP J. Deere Diesel
HYD. PUMP:	Fixed Gear or Variable Piston
MAX. FLOW:	90 GPM
MAX. PRESS:	2500 PSI
WEIGHT:	4060 lbs. (skid)
HOSE PORTS:	1 1/2"
FUEL CAPACITY:	89 Gallons

# CUSTOM OPTIONS

**HYDRA-TECH PUMPS** offers solutions to many unusual pump or hydraulic power requirements. From variations of our standard products to completely new designs, we can build the right product for you.

## *Here's just a sampling:*

Power Units that drive oil field tapping machines, diving units, drill rigs, cranes and winches, gas turbine starting units, boring machines, oil skimmers, gold mining pumps, and even self-contained pumping systems for environmental remediation have all been custom built for our clients the **world** over.



### **S4THL Pump with Jetting Ring**

Here's a little creative thinking! A submersible pump fitted with a water jetting ring for sludge suspension.



### **Submersible Pump**

This pump was used to recirculate hot water in a sewer relining process. Another example of a customized product solution only from HYDRA-TECH!



**HYDRA-TECH** customizes for specific purposes, unique environmental conditions, and even color matching.

*Just ask!*

## **HYDRA-TECH also provides pump accessories:**



**Hydraulic Hoses**

**Dredging Strainer**



**Industrial Suction/Discharge Hose**

**Call For Details on other HYDRA-TECH options!**

# PUMP AND POWER UNIT COMPATIBILITY CHART

		HYDRAULIC POWER UNITS Grouped by Horsepower								
		HT6-7	HT11-13	HT20-25	HT30-35	HT50-60	HT75	HT100	HT150	HT200
<b>HYDRA-TECH SUBMERSIBLE PUMPS</b>	<b>S310</b>	●	●							
	<b>S2T/TC-2</b>	●	●							
	<b>S1.5A</b>		●							
	<b>S3T/S3TR</b>		●							
	<b>S3TC</b>		●							
	<b>S6P</b>		●							
	<b>S3CSL</b>		●							
	<b>S3A</b>			●						
	<b>S3CML</b>			●	●					
	<b>S3VHL</b>			●	●					
	<b>S4T</b>			●	●					
	<b>S4CSL</b>			●	●					
	<b>S8M</b>			●	●					
	<b>S4SCR</b>			●	●					
	<b>S4VHL</b>				●	●	●			
	<b>S6TC</b>				●	●	●			
	<b>S3CHL</b>					●	●			
	<b>S4THL</b>					●	●			
	<b>S6T</b>					●	●			
	<b>S6V</b>					●	●			
	<b>S6CSL</b>					●	●			
	<b>S12M</b>					●	●			
<b>S6A</b>					●	●	●			
<b>S8T</b>							●	●		
<b>S10T</b>							●	●		
<b>S18M</b>							●	●		
<b>S6105</b>							●	●	●	
<b>S6150</b>							●	●	●	
<b>S6200</b>							●	●	●	
<b>S6250</b>							●	●	●	
<b>S6300</b>							●	●	●	

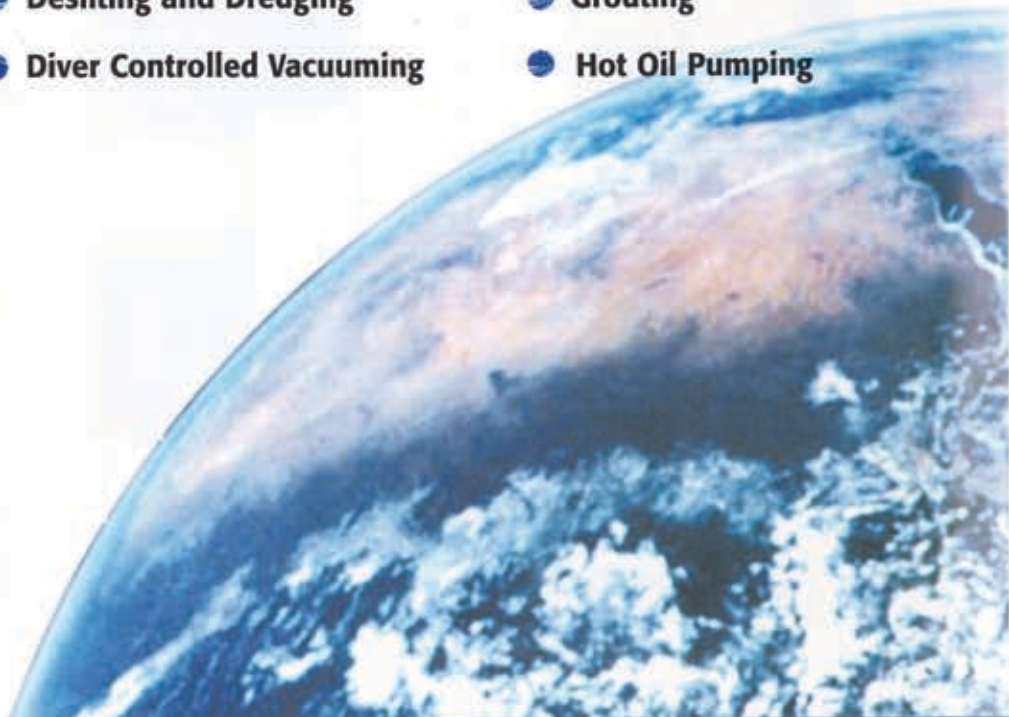
- RECOMMENDED COMBINATION
- CAN BE USED INDIVIDUALLY, OR IN MULTIPLES WITH PROPER FLOW CONTROLS



# HYDRA-TE Are Used In All Around

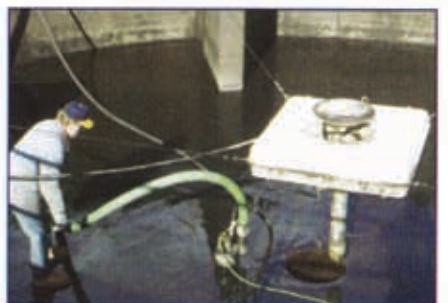


- Aerial Fire Fighting
- Ballast Pumping
- Bilge Pumping
- Blast Hole Dewatering
- Chemical Barge Transfer
- Chemical Waste Lagoons
- Cofferdam Dewatering
- Construction Jobsite Dewatering
- Deepwell Dewatering
- Desilting and Dredging
- Diver Controlled Vacuuming
- Dust Control
- Feeding Filter Presses
- Fertilizer Mixing
- Fire Fighting
- Fish Farming
- Flood Control
- Flood Irrigation
- Gold Mining
- Grit Chamber Cleaning
- Grouting
- Hot Oil Pumping



# CH PUMPS Applications The World!

- Lake Drainage
- Landfill Test Wells
- Manhole Dewatering
- Mine Dewatering
- Municipal Waste Lagoons
- Oil Skimming and Recovery
- Paper Pulp Mills
- Phosphate Mining
- Portable Sewage Lift Stations
- Power Plant Water Intakes
- Quarry Dewatering
- Refinery Waste Pumping
- Sewage Digester Cleaning
- Sewer By-Pass Pumping
- Sewer Relining
- Ships Cargo Off-loading
- Sprinkler Irrigation
- Tank Stripping
- Tank Truck Loading
- Telephone and Utility Trucks
- Tunnel Dewatering
- Village Water Supply



**motralec**

4 rue Lavoisier - ZA Lavoisier - 95223 HERBLAY CEDEX  
Tel. : 01.39.97.65.10 / Fax. : 01.39.97.68.46  
Demande de prix / e-mail : [service-commercial@motralec.com](mailto:service-commercial@motralec.com)  
[www.motralec.com](http://www.motralec.com)