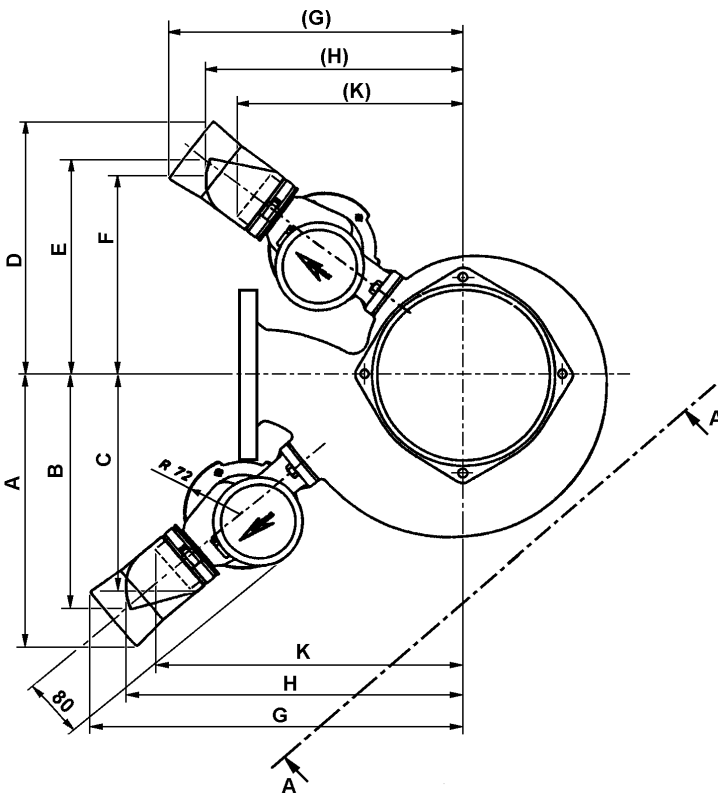
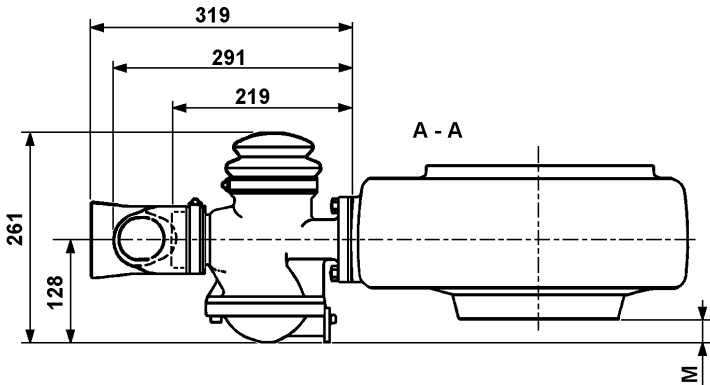


FICHE TECHNIQUE

Encombrement vanne de brassage 4901 montée sur volute pompe



| Pompe | Version | A | B | C | D | E | F | G | H | K | M |
|-------|----------|-----|-----|-----|-----|-----|-----|-----|-----|-----|----|
| 3085 | LT 4p | 387 | 345 | 291 | - | - | - | 380 | 346 | 327 | 18 |
| | LT 6p | 352 | 303 | 279 | - | - | - | 479 | 433 | 395 | 30 |
| | MT D(HT) | 382 | 336 | 295 | - | - | - | 398 | 355 | 328 | 45 |
| | HT | 391 | 351 | 293 | - | - | - | 315 | 284 | 267 | 68 |
| | D (MT) | 355 | 306 | 280 | - | - | - | 399 | 352 | 315 | 21 |
| 3102 | MT | 332 | 283 | 265 | - | - | - | 463 | 417 | 374 | 22 |
| | LT 6p | 389 | 341 | 309 | - | - | - | 449 | 403 | 369 | 30 |
| | LT 4p | 352 | 303 | 279 | - | - | - | 479 | 433 | 395 | 30 |
| | HT | 374 | 346 | 274 | - | - | - | 296 | 296 | 296 | - |
| 3127 | D | 368 | 320 | 289 | - | - | - | 422 | 376 | 343 | - |
| | MT ø150 | 395 | 346 | 321 | - | - | - | 480 | 433 | 396 | 2 |
| | HT ø80 | 380 | 341 | 281 | - | - | - | 379 | 350 | 333 | 34 |
| | SH | 380 | 341 | 281 | - | - | - | 379 | 350 | 333 | 34 |
| | LT | - | - | - | 363 | 314 | 289 | 397 | 350 | 313 | - |
| | HT | 361 | 313 | 281 | - | - | - | 475 | 429 | 395 | 57 |
| | MT ø100 | 367 | 318 | 293 | - | - | - | 464 | 417 | 380 | 7 |
| | HT ø100 | 412 | 363 | 338 | - | - | - | 452 | 405 | 367 | 14 |
| 3140 | D (MT) | - | - | - | 398 | 350 | 322 | 435 | 389 | 353 | - |
| | LT | - | - | - | 382 | 333 | 313 | 450 | 402 | 361 | - |
| | HT | 386 | 337 | 312 | - | - | - | 490 | 443 | 406 | 14 |
| | MT | 395 | 346 | 326 | - | - | - | 548 | 500 | 459 | - |
| 3152 | HT 60Hz | 412 | 363 | 338 | - | - | - | 450 | 403 | 366 | - |
| | D | - | - | - | 398 | 350 | 322 | 435 | 389 | 353 | - |
| | HT ø150 | 353 | 304 | 288 | - | - | - | 527 | 479 | 436 | - |
| | HT ø100 | 386 | 337 | 312 | - | - | - | 490 | 443 | 406 | 14 |
| | SH | 386 | 337 | 312 | - | - | - | 490 | 443 | 406 | 14 |
| 3153 | MT | 395 | 346 | 326 | - | - | - | 548 | 500 | 459 | - |
| | LT | - | - | - | 432 | 384 | 352 | 432 | 386 | 352 | - |
| | D | - | - | - | 398 | 350 | 322 | 435 | 389 | 353 | - |
| | HT | - | - | - | 369 | 320 | 297 | 427 | 379 | 344 | 18 |
| 3170 | MT | - | - | - | 369 | 320 | 297 | 427 | 379 | 344 | - |
| | LT ø200 | - | - | - | 369 | 320 | 297 | 427 | 379 | 344 | - |
| | LT ø250 | - | - | - | 428 | 379 | 348 | 428 | 381 | 348 | - |
| 3171 | LT | 447 | 398 | 381 | - | - | - | 671 | 623 | 581 | - |
| | MT | - | - | - | 432 | 383 | 355 | 459 | 412 | 377 | - |
| | HT | - | - | - | 444 | 396 | 364 | 444 | 398 | 364 | - |
| 3201 | HT | - | - | - | 392 | 343 | 318 | 455 | 408 | 370 | 13 |
| | MT | - | - | - | 392 | 343 | 318 | 455 | 408 | 370 | - |
| | SH | 439 | 390 | 375 | - | - | - | 675 | 627 | 584 | - |
| 3202 | HT | - | - | - | 388 | 339 | 318 | 494 | 446 | 407 | - |
| | LT | 477 | 428 | 411 | - | - | - | 751 | 703 | 661 | - |
| | SH | 459 | 411 | 379 | - | - | - | 444 | 398 | 364 | - |
| 3300 | MT | - | - | - | 422 | 373 | 348 | 491 | 444 | 406 | - |
| | LT | - | - | - | 422 | 373 | 348 | 491 | 444 | 406 | - |
| | HT | - | - | - | 417 | 368 | 343 | 485 | 438 | 400 | - |
| 3300 | MT | - | - | - | 418 | 368 | 354 | 572 | 525 | 481 | - |
| | LT | - | - | - | 415 | 366 | 345 | 529 | 481 | 441 | - |
| | HT | 429 | 381 | 349 | - | - | - | 599 | 553 | 519 | - |