

# Flygt APP 700 monitoring and control units

Advanced control for pump station applications



*Engineered for life*

**motralec**

4 rue Lavoisier . ZA Lavoisier . 95223 HERBLAY CEDEX  
Tel. : 01.39.97.65.10 / Fax. : 01.39.97.68.48  
Demande de prix / e-mail : [service-commercial@motralec.com](mailto:service-commercial@motralec.com)

[www.motralec.com](http://www.motralec.com)

# Why compromise?

There are dozens of different pump controllers out there. But most of them are made to work in dozens of different applications. However, the Flygt control units are made especially for controlling pumps. And having worked with pumps and pumping for over fifty years, we know exactly what people working with water handling need to handle water.

## All the functions you need – built in

Flygt APP controllers come with a range of well thought-out functions. These include:

- comprehensive pump control such as random pump start and flushing.
- advanced pump supervision, including capacity, running times, leakage and temperature alarms.
- accurate flow measurement of incoming and pumped volumes.

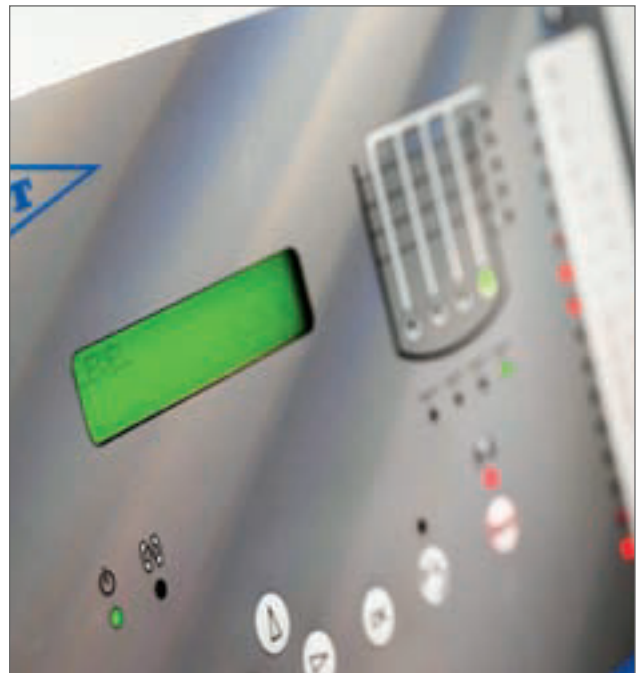
The list of functions is long. Together, they will save personnel and energy costs, while helping to protect the environment.



## Easy to use

With years of experience in wastewater and water treatment, we know that it's vital to make controllers easy to use.

Service personnel can see at a glance what's been going on thanks to self-explanatory diagrams of pumps and pump sumps with LEDs. Settings can be changed quickly and easily on the LCD display, or remotely from a PC.



Front mounted Flygt APP 721

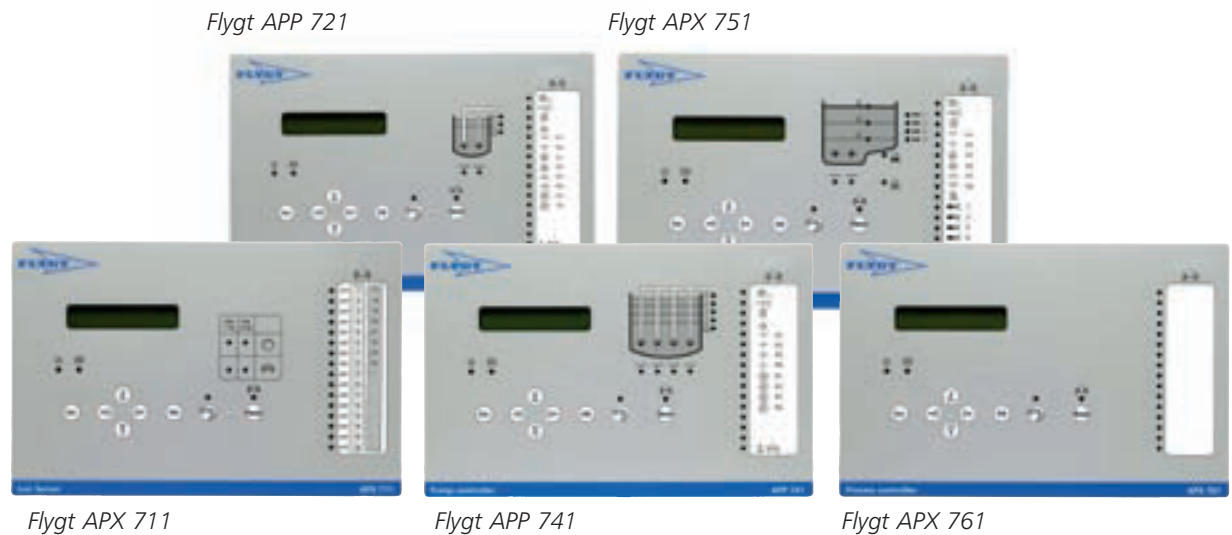
## Full control – whenever, wherever

The Flygt APP controller records everything that happens in your pump station. With a generous built-in memory, it stores up to 1,000 events and then generates easy-to-read reports and trend graphs. Data include exact dates and times, all of which can be accessed on-site and centrally.

When an incident has occurred, the unit automatically contacts the control central over a dial-up or dedicated telephone line, GSM, radio, fibre or Ethernet connection.

Featuring the most open architecture available in a pump controller, our APP supports AquaCom, Comli and Modbus protocols and is compatible with different SCADA applications.

# Different sizes & different applications



## Whatever your needs

No matter how many or how few pumps you want to control, there is an Flygt APP controller that suits your needs. Some of the units can even be used in applications such as retention basins, wastewater treatment plants and freshwater handling.

## For special needs

With the Flygt controller, you can customise your own special functions. And programming is easy, thanks to the flexible PC-based operating system.

## Operate one, operate all

To ensure that your engineers can operate all the controllers in the range, we have standardized the control panel. All units feature a user-friendly panel with self-explanatory diagrams and LED lamps.

## Easy to install in small and complex networks

Flygt APP controllers are easy to install and to integrate with SCADA systems, due to the PC-based operating system and open standards. With a huge number of systems solutions available, Flygt APP controllers can be used both by smaller municipalities and by those with advanced needs, multiple workstations and web interfaces.

Applications	APX 711	APP 721	APP 741	APX 751	APX 761
Pump stations with 1–2 pumps		•			
Pump stations with 3–4 pumps			•		
Pump stations with >4 pumps					•
Retention basins				•	
Alarm receiver/transmitter	•				
Wastewater and treatment plant applications					•

# Monitoring & control – the advantages



## **Reduce service visits and emergency call-outs**

With a well-functioning monitoring and control system, service visits to pump stations will be radically reduced. Unnecessary service checks can be eliminated with the help of automatically generated service alerts. And with detailed information sent to your control centre, you'll be able to slash the number of emergency call-outs.

## **Reduce environmental impact**

Overflow alarms help operators react quickly to spillage. By keeping track of previous overflows, a monitoring and control system can help prevent future discharges.

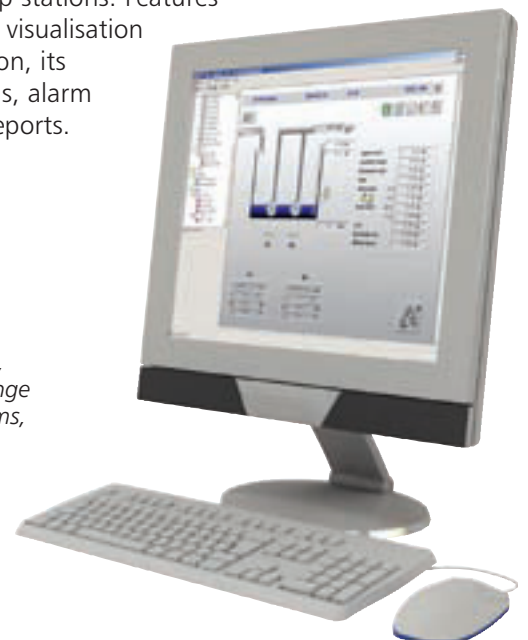
## **Manage your network from your desktop**

Thanks to its open architecture, the Flygt APP controller can be connected to a wide range of SCADA supervisory systems.

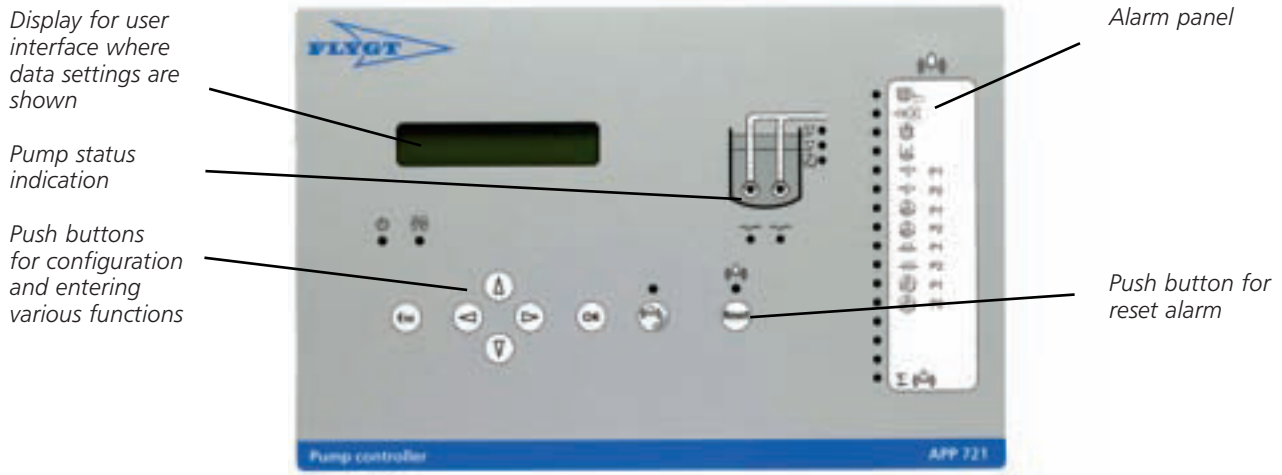
Flygt AquaView, our own supervisory software, is a modern Windows-based system. Like APP, it has been developed specifically for fluid handling applications. Used together with APP controllers, AquaView gives a complete picture of your fluid handling system.

Flygt AquaView also gives you a close-up of individual pumps and pump stations. Features include real-time visualisation of each installation, its operational status, alarm logs and trend reports.

*Flygt AquaView provides a concise, comprehensive range of reports on alarms, flow conditions and trends.*



# More functions, more control



If you're working with water and wastewater management, these are the functions you want. We know, because you told us.

## Local status displayed on site

Self-explanatory diagrams with LEDs on the front panel give an immediate overview of your pumps and pump station.

## Level measurement

With pressure or ultrasonic sensors you get an accurate picture of water levels.

## Flow calculation

The Flygt APP controller calculates incoming flows and pumped volumes with a high degree of accuracy.

## Pump supervision

The Flygt APP monitors everything from pump capacity, running times and number of starts to leakage, service reminders and high temperature alarms.

## Automatic sump cleaning

Flygt APP reduces the need for on-site maintenance by controlling random pump starts, pump sump flushing and automatic sump cleaning functionality.

## Monitoring energy costs

By measuring and reporting power consumption, Flygt APP gives you better control over your energy costs.

## Alarm handling

Each controller has a built-in memory that stores up to 1,000 alarms. Alarms are sent to text pagers or via SMS allowing service personnel to prioritise site visits.

## Overflow protection

Flygt APP controllers record the duration, number of and volume of overflows. A blocking function makes it possible to control designated overflow points.

## Maintenance support

With Flygt controllers you can adjust the running time of each pump. They also notify service engineers when it is time to perform maintenance checks.

## Remote control and reports

By using Flygt APP units together with SCADA software, you can remote control pumps and compile reports about pump station activity.

## Open architecture

Due to the open architecture, Flygt APP controllers support AquaCom, Comli and Modbus protocols and can interface with a range of different SCADA systems.



### What can ITT Water & Wastewater do for you?

Integrated solutions for fluid handling are offered by ITT Water & Wastewater as a world leader in transport and treatment of wastewater. We provide a complete range of water, wastewater and drainage pumps, equipment for monitoring and control, units for primary and secondary biological treatment, products for filtration and disinfection, and related services. ITT Water & Wastewater, headquartered in Sweden, operates in some 140 countries across the world, with own plants in Europe, China and North and South America. The company is wholly owned by the ITT Corporation of White Plains, New York, supplier of advanced technology products and services.



WEDECO



## motralec

4 rue Lavoisier . ZA Lavoisier . 95223 HERBLAY CEDEX

Tel. : 01.39.97.65.10 / Fax. : 01.39.97.68.48

Demande de prix / e-mail : [service-commercial@motralec.com](mailto:service-commercial@motralec.com)

[www.motralec.com](http://www.motralec.com)