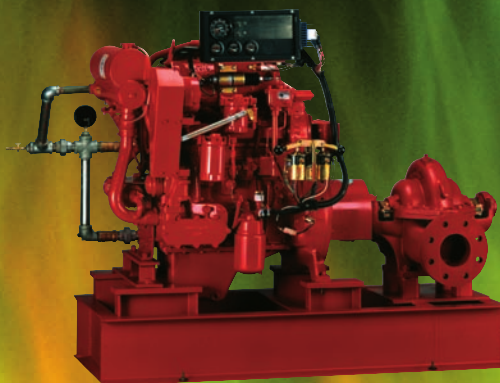
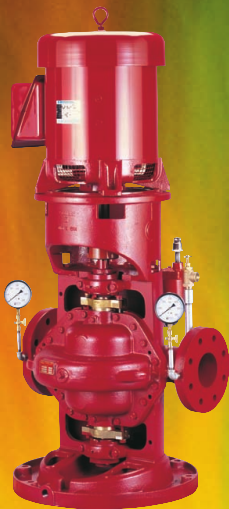
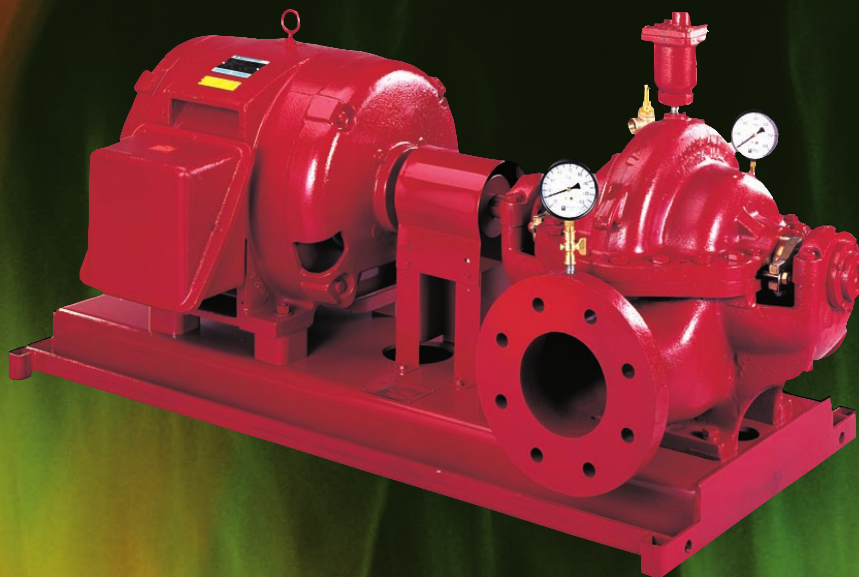
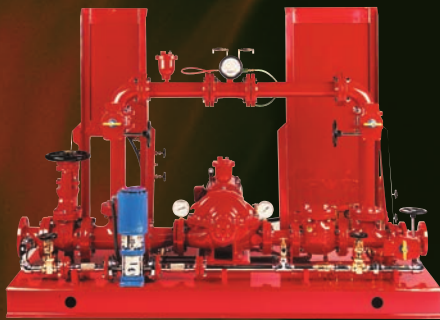


AURORA PUMP

FIRE PUMP LINE



motralec

4 rue Lavoisier . ZA Lavoisier . 95223 HERBLAY CEDEX

Tel. : 01.39.97.65.10 / Fax. : 01.39.97.68.48

Demande de prix / e-mail : service-commercial@motralec.com

www.motralec.com

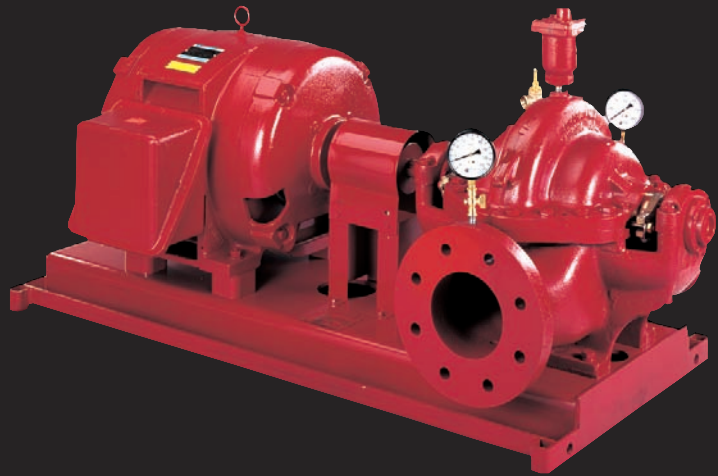
ap AURORA®
Pentair Water

Vertical Turbine



- UL Listed/FM Approved/NFPA-20 Design
- Flows from 250 to 4500 GPM
- Pressures from 75 to 387 PSI
- For Commercial, Industrial and Marine Use
- Special Materials for Seawater Applications
- Diesel and Electric Driven

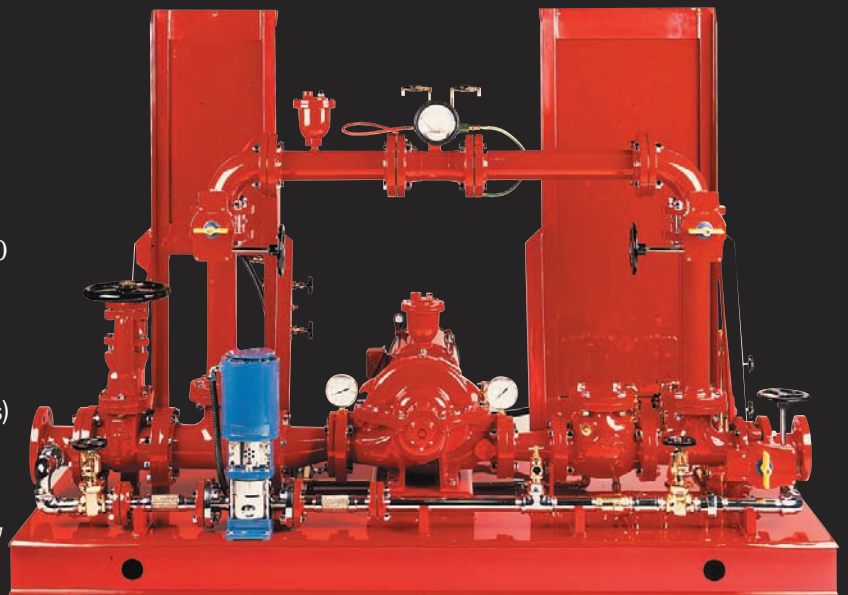
Horizontal Split Case



- UL Listed/FM Approved/NFPA-20 Design
- Flows from 250 to 5000 GPM
- Pressures from 40 to 490 PSI
- For Commercial and Industrial Use
- Diesel and Electric Driven

Packaged Fire Pump Systems

- UL Listed/FM approved Aurora fire pump
- UL Listed/FM approved fire pump controller
- ETL Listed packaged fire pump system
- Aurora jockey pump
- UL Listed jockey pump controller
- Pressure sensing lines complete per NFPA 20
- Listed OS & Y gate & butterfly valves
- Suction and discharge pressure gauges
- Automatic casing air release valve
- Casing pressure relief valve (electric packages)
- Hose header with valves, caps & chains
- Suction and discharge piping per NFPA 20
- All electrical components pre-wired at factory
- Complete system hydrostatically tested



Vertical Split Case

- UL Listed/FM Approved/NFPA-20 Design
- Flows from 50 to 750 GPM
- Pressures from 40 to 205 PSI
- For Commercial, Residential and Industrial Use
- Space Saving Design



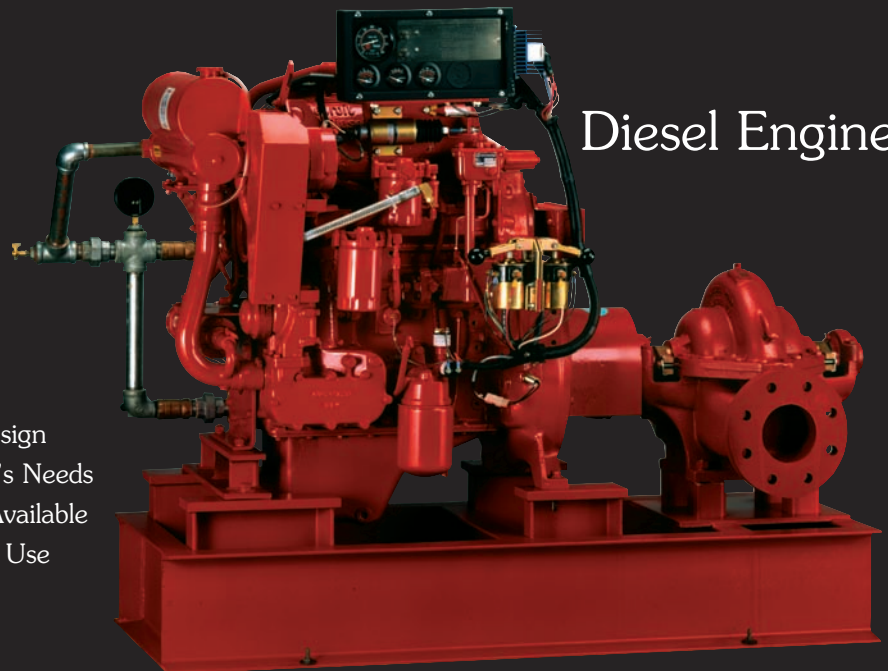
Vertical Inline



- UL Listed/FM Approved/NFPA-20 Design
- Flows from 250 to 2500 GPM
- Pressures from 40 to 200 PSI
- For Commercial and Industrial Use
- Space Saving Design

Diesel Engines

- UL Listed/FM Approved/NFPA-20 Design
- Engines are Selected for the Customer's Needs
- Fuel Tank and Other Accessories are Available
- For Commercial, Industrial and Marine Use



Fire Pump Houses

- Designed to meet specific environmental requirements
- All-steel building
- Easy access entries
- Electric heaters with built-in thermostat
- Continuous duty exhaust fan
- AC motor/solenoid operated louver
- Interior fluorescent and flood light, exterior 70 W HPS light
- Sprinkler system per NFPA
- Finished through wall or floor penetration
- Mini power zone (electric packages)
- Interior wall liner (optional)



NOTE: Aurora Pump reserves the right to make revisions to its products and their specifications, and to this bulletin and related information, without notice.

AURORA PUMPS ARE



motralec

4 rue Lavoisier . ZA Lavoisier . 95223 HERBLAY CEDEX

Tel. : 01.39.97.65.10 / Fax. : 01.39.97.68.48

Demande de prix / e-mail : service-commercial@motralec.com

www.motralec.com

ap AURORA®
Pentair Water

Fiche produit Motralec Aurora Fire Pump - fiche technique | Motralec

■ **DEMANDE DE PRIX RAPIDE** : <https://www.motralec.com/demandeContact>