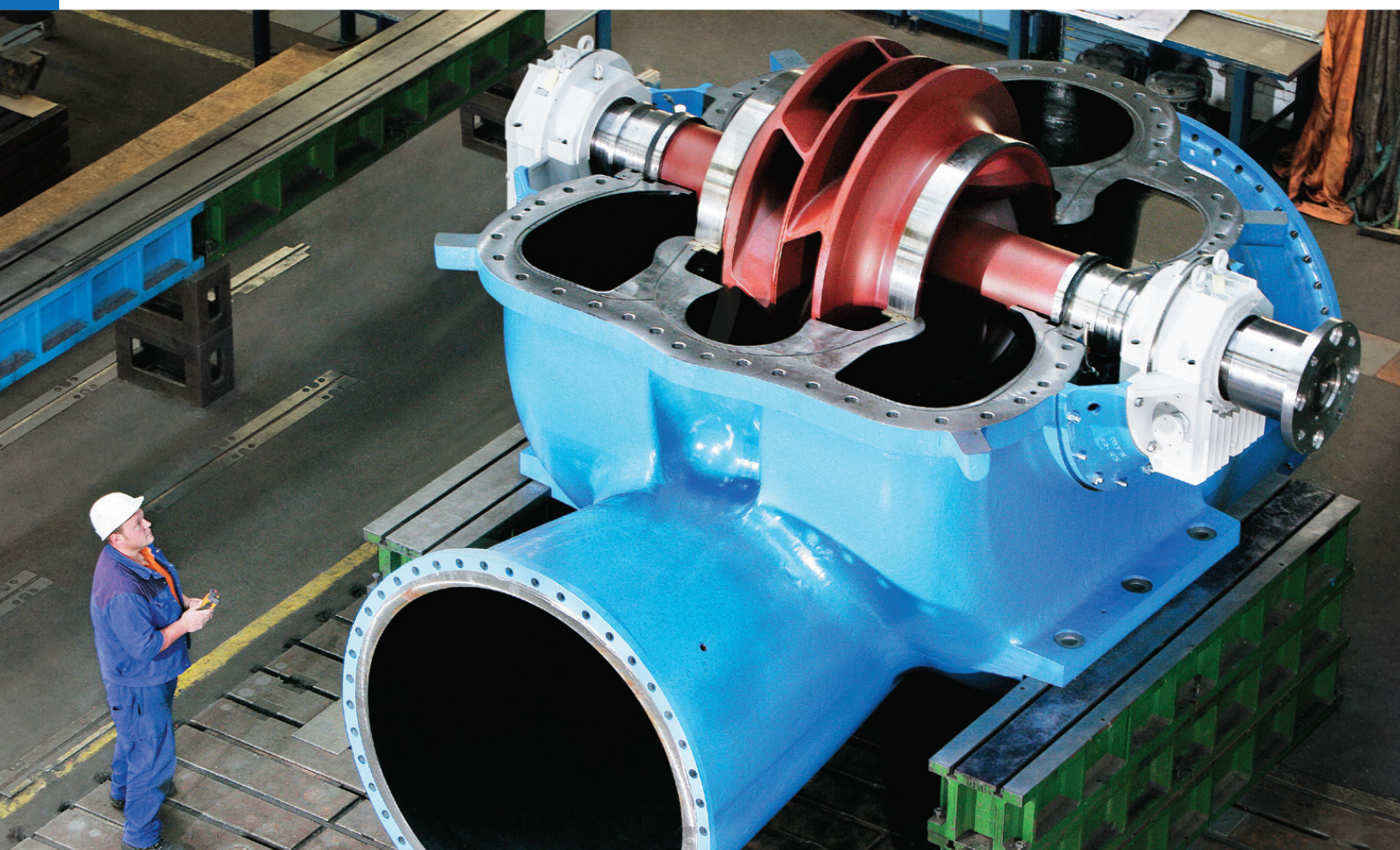




ANDRITZ Double Suction Split Case Pumps

For water supply to Beijing



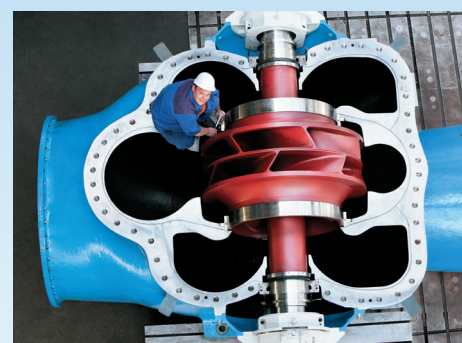
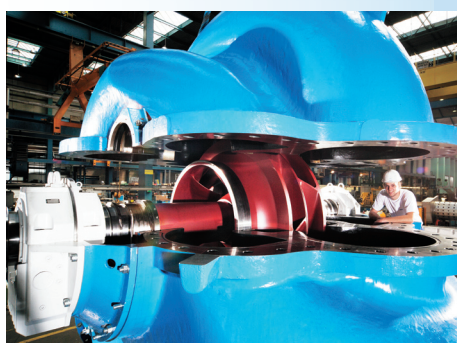
motralec

4 rue Lavoisier . ZA Lavoisier . 95223 HERBLAY CEDEX
Tel. : 01.39.97.65.10 / Fax. : 01.39.97.68.48

Demande de prix / e-mail : service-commercial@motralec.com

www.motralec.com

One of the world's largest Horizontal Double Suction Split Case Pumps



FP 60-1800 Series			
Technical Data		Weight	
Flow rate	10 m ³ /s	Lower part of casing	approx. 35.7 t
Head	59.2 m	Upper part of casing	approx. 13.4 t
Speed	adjustable between 236 and 375 rpm	Total	approx. 63.0 t
Motor power	7300 kW		
Dimensions		Material	
Impeller diameter	1750 mm	Casing	steel casting
Inlet diameter	2000 mm	Impeller	stainless steel
Outlet diameter	1800 mm	Impeller shaft	tempered steel
Length/height/width (casing)	5450/4500/3200 mm		

motralec

4 rue Lavoisier . ZA Lavoisier . 95223 HERBLAY CEDEX
 Tel. : 01.39.97.65.10 / Fax. : 01.39.97.68.48
 Demande de prix / e-mail : service-commercial@motralec.com

www.motralec.com